

INVESTMENT OPPORTUNITY**City Centre Apartment**

Augustus House, 3 New Augustus Street, Bradford, BD1 5LL

**For more information
contact:**

☎ 0113 236 0009
📠 0113 236 2613
✉ info@bentleyklyne.co.uk

At a glance

- 1 Bedroom Apartments
- Prices from £74,950
- Potential Rental Returns from £5400.00 per annum
- Prominent Location in City Centre Area
- 2 Minute Walk to The New Westfield Development



City Centre Apartment

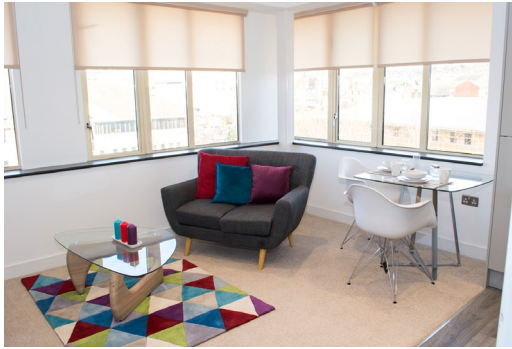
This popular development located within the upcoming City Centre, close by to the Westfield Shopping Centre, we are offering future landlord's value for money in this one bedroom apartment.

Entrance Hall 7' 2" x 12' 5" (2.2m x 3.8m)

The large entrance hall gives access to the kitchen, bathroom and bedroom.

Bathroom 4' 9" x 9' 5" (1.5m x 2.9m)

The bathroom is beautifully fitted, with a white 3 piece suite, including shower over bath. It also has a large wall mounted mirror and chrome heated towel rail



Kitchen - Open Plan

This kitchen has a dishwasher, under counter fridge/freezer, integrated oven and microwave, overhead extractor and additional storage

Bedroom 1 15' 3" x 8' 10" (4.65m x 2.70m)

The master bedroom includes a king size double bed, large fitted wardrobe, carpeted flooring, floor-to-ceiling windows, two bedside tables and chest of drawers.

Living Room 13' 1" x 22' 6" (4.0m x 6.9m)

The lounge is very spacious in size, with plenty of room for dining. Wooden flooring runs throughout the space, fixtures and fittings are finished off in brushed stainless steel.



Ground Rent: £325.00 per annum
Service Charge: £750.00 per annum
Lease: 125 years
Parking: £500.00 per annum



Furniture Packs Available from
£2500.00

Floor Plan:

